

250 Series – Single-Size High Flow Diverters



4" High-Flow Diverter

	<u>U.S. Standard</u>	<u>Metric</u>
<i>Size Range</i>	4.0"	100 mm
<i>Diameter</i>	3.0"	76 mm
<i>Length</i>	12.0"	305 mm
<i>Bypass Size</i>	2.0"	51 mm
<i>Required Inflation Pressure</i>	25 psi	1.7 bar
<i>Flexible Bypass Hose Part #</i>	255-2	255-2

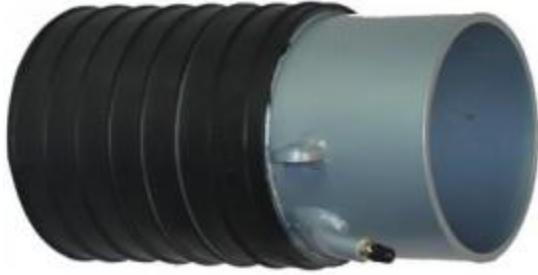
Item Number: 250-4



6" High-Flow Diverter

	<u>U.S. Standard</u>	<u>Metric</u>
<i>Size Range</i>	6.0"	150 mm
<i>Diameter</i>	5.0"	127 mm
<i>Length</i>	12.0"	305 mm
<i>Bypass Size</i>	4.0"	102 mm
<i>Required Inflation Pressure</i>	25 psi	1.7 bar
<i>Flexible Bypass Hose Part #</i>	255-4	255-4

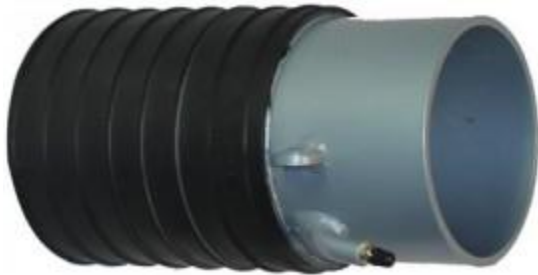
Item Number: 250-6



8" High-Flow Diverter

	<u>U.S. Standard</u>	<u>Metric</u>
<i>Size Range</i>	8.0"	200 mm
<i>Diameter</i>	7.0"	178 mm
<i>Length</i>	12.0"	305 mm
<i>Bypass Size</i>	6.0"	152 mm
<i>Required Inflation Pressure</i>	25 psi	1.7 bar
<i>Flexible Bypass Hose Part #</i>	255-6	255-6

Item Number: 250-8



10" High-Flow Diverter

	<u>U.S. Standard</u>	<u>Metric</u>
<i>Size Range</i>	10.0"	250 mm
<i>Diameter</i>	9.0"	229 mm
<i>Length</i>	15.0"	381 mm
<i>Bypass Size</i>	8.0"	203 mm
<i>Required Inflation Pressure</i>	25 psi	1.7 bar
<i>Flexible Bypass Hose Part #</i>	255-8	255-8

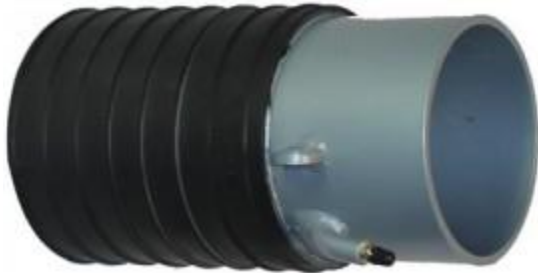
Item Number: 250-10



12" High-Flow Diverter

	<u>U.S. Standard</u>	<u>Metric</u>
Size Range	12.0"	300 mm
Diameter	10.0"	254 mm
Length	17.0"	432 mm
Bypass Size	10.0"	254 mm
Required Inflation Pressure	25 psi	1.7 bar
Flexible Bypass Hose Part #	255-10	255-10

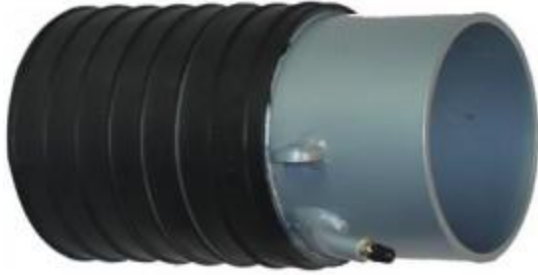
Item Number: 250-12



15" High-Flow Diverter

	<u>U.S. Standard</u>	<u>Metric</u>
Size Range	15.0"	375 mm
Diameter	13.5"	343 mm
Length	18.0"	457 mm
Bypass Size	12.0"	305 mm
Required Inflation Pressure	25 psi	1.7 bar
Flexible Bypass Hose Part #	255-12	255-12

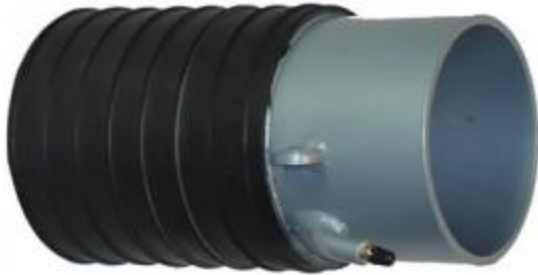
Item Number: 250-15



18" High-Flow Diverter

	<u>U.S. Standard</u>	<u>Metric</u>
Size Range	18.0"	450 mm
Diameter	16.0"	406 mm
Length	18.0"	457 mm
Bypass Size	14.0"	356 mm
Required Inflation Pressure	25 psi	1.7 bar
Flexible Bypass Hose Part #	255-14	255-14

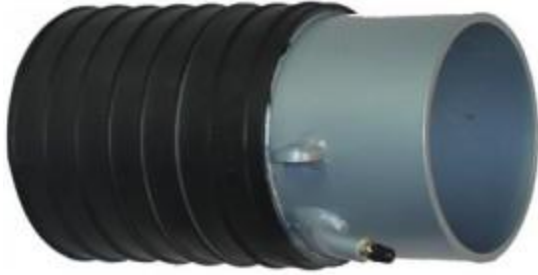
Item Number: 250-18



21" High-Flow Diverter

	<u>U.S. Standard</u>	<u>Metric</u>
Size Range	21.0"	525 mm
Diameter	19.5"	495 mm
Length	18.0"	457 mm
Bypass Size	18.0"	457 mm
Required Inflation Pressure	25 psi	1.7 bar
Flexible Bypass Hose Part #	255-15	255-15

Item Number: 250-21



24" High-Flow Diverter

	<u>U.S. Standard</u>	<u>Metric</u>
Size Range	24.0"	600 mm
Diameter	22.5"	572 mm
Length	18.0"	457 mm
Bypass Size	20.0"	508 mm
Required Inflation Pressure	25 psi	1.7 bar
Flexible Bypass Hose Part #	255-20	255-20

Item Number: 250-24



27" High-Flow Diverter

	<u>U.S. Standard</u>	<u>Metric</u>
Size Range	27.0"	675 mm
Diameter	25.5"	648 mm
Length	18.0"	457 mm
Bypass Size	24.0"	610 mm
Required Inflation Pressure	25 psi	1.7 bar
Flexible Bypass Hose Part #	255-24	255-24

Item Number: 250-27



30" High-Flow Diverter

	<u>U.S. Standard</u>	<u>Metric</u>
Size Range	30.0"	750 mm
Diameter	28.5"	724 mm
Length	18.0"	457 mm
Bypass Size	24.0"	610 mm
Required Inflation Pressure	25 psi	1.7 bar
Flexible Bypass Hose Part #	255-24	255-24

Item Number: 250-30



Flex Hose Sizes: 4" | 6" | 8" | 10" | 12" | 14" | 16" | 18" | 20" | 24"